

GLOBAL SALES NETWORK



XF Series

1.0 / 1.5 / 1.8 / 2.0 / 2.5 / 3.0 / 3.5 t
Diesel / Gasoline / LPG



CE CERTIFICATE



ISO14001

ISO14001: 2004



ISO9001

ISO9001: 2008

HANGCHA GROUP CO., LTD.
(Zhejiang Hangcha Imp. & Exp.Co.,Ltd.)

www.hcforlift.com

Add:398 Shi Qiao Road, Hangzhou Zhejiang province, China(310022)

Factory site:No.88, Donghuan Rd., Economic Development Zone Lin'an, Zhejiang, China(311305)

Tel: +86-571-88926755

Fax: +86-571-88926789 88132890

E-mail: sales@hcforlift.com

HANGCHA GROUP CO., LTD. Reserves the right to make any changes without notice concerning colors, equipment, or specifications detailed in this brochure, or to discontinue individual models. The colors of trucks, delivered may differ slightly from those in brochures.

2014 VERSION 4/COPYRIGHT 2014/06

HANGCHA GROUP CO., LTD.



Comfortable operation

- 1 The extra foot space is provided to reduce operator fatigue significantly. The new wide-open, non-slip step makes getting in and out easy and safe.

The optional Electro-hydraulic proportional control system contributes more sensitive and precise load handling. The easy-to-operate levers provide total load handling operation. An armrest is provided to reduce fatigue.

- 2 In addition to the soft landing system, the soft lifting system is adopted (front lifting cylinders of triplex mast and full free duplex mast), as a result, the noise and shock of the mast significantly decreases.

- 3 The developed front lifting cylinders with smaller outer diameter give the operator superior forward visibility.

The double front lifting cylinders provide better forward visibility.



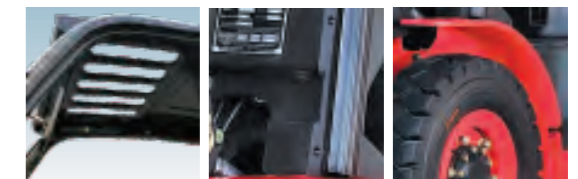
Reliability

By focusing on enhancing reliability, reducing downtime, the XF series is able to make the greater productivity for customer.

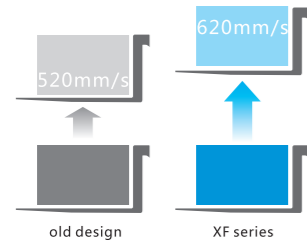
The new aluminum alloy transmission with full floating structure features excellent heat dissipation capability, more and thicker disc meet the most demanding applications.

XF series features rugged design, stamped frame and engine hood, stamped instrument panel and head guard, heavy profile rail mast combine to provide excellent rigidity, which ensures outstanding reliability even in heavy-duty work.

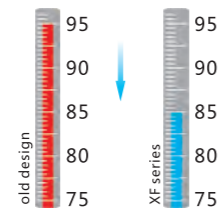
- 4 Extra capacity combined radiator with serpentine wave and optimized heat dissipation channel enhance the heat dissipation capability to keep engine reliability even in heavy-duty applications.



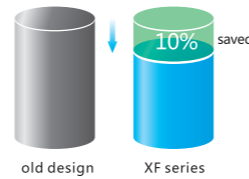
Productivity



Speed at full load
(2.5T 4TNE98)



Hydraulic oil
balanced temperature
(2.5T 4TNE98)



fuel consumption

Dynamic load sensing hydraulic steering system, Efficiency lighting system, lower fuel consumption, combine to provide increased productivity and reduced operating costs.

The new Dynamic load sensing hydraulic steering system contributes to reduce loss of hydraulic and improve energy efficiency.

The new efficiency lighting system employs LED illuminant and new type reflector to reduce energy consumption, improve significantly illumination performance and prolong work time.

By optimizing transmission design, the power train provides higher efficiency. The fuel consumption is reduced by 10%.

Environmental Friendliness



A lineup of powerful and clean engines and environment friendly materials help to reduce the output of undesirable substances over the lifetime of the truck, while creating a cleaner work environment.

Each model employs a specially developed engine for the optimum balance of power and superior environmental performance. All engines are in compliance with EU stage-III control regulation.

The environment friendly materials, such as non-asbestos brake shoe and new type sealing gasket, are adopted entirely to pursue environmental safety.

Comfortable operation

In developing the new XF Series, comfort and ease of operation is carefully considered, for example, to improve vibration levels, compound engine damper and full floating power train are adopted.

Comfortable operating environments for operator also contribute to increased productivity.

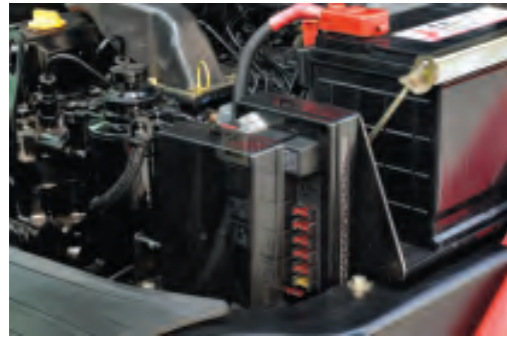
In addition to rubber damper between frames and steering axle, compound engine damper and full floating power train achieve flexible connection between frames and driving system, as a result, traveling vibrations and vibrations from the driving system are significantly reduced.

The enlarged capacity of optimized exhaust muffler, the intake muffler and the noise shield technologies provide significantly lower noise levels.

- ① The new, relocated easy- to-see LCD meter lets the operator check on all aspects of operational status at a glance.
- ② The new automobile-style light/turn-signal lever and forward-reverse lever are ergonomically designed and arranged to improve comfort and productivity.
- ③ The small diameter steering wheel with tilt adjustment provides the ideal operating position. The superior responsiveness of the steering wheel optimizes maneuverability even in narrow spaces.
- ④ The parking brake is specially developed. The operational force is reduced by 30%.
- ⑤ The automobile-style suspended pedals provide more ergonomic operation .



The new vehicle controller integrates all electrical components, features excellent durability for temperature, water and vibration for most demanding operation.



The new stamped air cleaner featuring tangential intake, double seal with safety filter is durable, corrosion-free and vibration-resistant, provides better filter efficiency and lower intake resistance than the previous.



Easy maintenance

Careful design facilitates inspection and servicing. Easy maintenance reduces the amount of downtime and helps to reduce cost also.

The cover on the Panel can be lifted up simply to check the brake fluid.

The easy-to-operate latch provides quick access to the engine compartment.

The two-piece design makes the floorboard easy to lift and remove for access to the power train.

The fasteners of the radiator cover can be turned easily by hand to enable quick inspections or servicing.



Standards

Transmission	Steering	Chassiss	Control	Hydraulic
Suspension transmission Oil filter Dipstick Oil cooler Non-asbestos bake	Full hydraulic power steering Smaller diameter steering wheel Adjuster of steering wheel	Skidproof pedal Rubber pedal Engine hood spring	Power steering Suspension pedal Integrated combination switch Cable parking brake	Dynamic load sending control valve (Diesel IC) Hydraulic oil filter Tilt cylender self-lock valve Hydraulic oil dipstick
Truck	Electronics		Mast	
Traction device Hand grip Standard seat Standard overhead guard Waterproof cover on the guard Back view mirror Pneumatic tyres Toolbox	Big capacity aluminum radiator Whirlwind air cleaner Safety filter High-efficient intake muffler High-efficient exhaust muffl Upright exhaust pipe	High-efficient front lights High-efficient LED rear lights Service-free start battery Combination controller LCD display Neutual switch Hour meter Fuel gauge Water temperature gauge heat ind cator-Pre Charging indicator Engine fuel pressure warning Transmission oil pressure warning Horn Reversing uzzer Power off	Standard wide view duplex mast Standard forks Standard fork carriage Standard load back rest Mast speed limiting valve Load safety valve Mast down buffer device Mast up buffer device Side roller	

Options

Truck	Transmission	Power	Hydraulic	Electronics	Mast
Cabin Cabin heater Front window Super elastic tyre Non-mark tyre(white/green) Suspension seat Extinguisher Cover of tilt cylender Heightening overhead guard Reversing assist grip Special given color Seat with sensor system Boot for tilt cylinder Counter weight net	2-D wheel Wet brake system	Duel fuel LPG system Big capacity copper radiator Upright exhaust system Middle-positioned exhaust system Air pre-cleaner Net cover of radiator Sparkle arrester Purified exhaust system Swiwel LPG bottle support Downward LPG bottle support Fan protector	Auxiliary hydraulic valve Electro-hydraulic proportional control system Return oil filter	OBD Front working light Rear working light Warning lamp Oil-water seperator warning	Duplex wide view free-lift mast Triplex wide view free-lift mast Triplex wide view 4-cylinder free-lift mast Special forks Wider fork carriage Wider load back rest

Safety

A wide range of technologies are applied to ensure absolute safety for both the operator and those in the surrounding.

An optional rear-pillar assist grip with a horn button enhances safety of operator while traveling in reverse.

The locking device of the engine hood damper and parking brake help add to safety.



- 1 The operator presence sensing system incorporates lifting/tilting and traveling locking function. When the operator leaves the seat, the system automatically locks lifting / tilting and disables traveling to ensure safety.
- 2 A throttling device is adopted to avoid the mast being out of control even some pipes are broken.



Optional attachments

Paper roll clamp Rotating bale clamp Load stabilizer Multi-drum clamp Bale clamp Drum clamp Dumping clamp Crane arm String Pole	Sideshifter Rotating forks Fork extensioner Load release device Carton clamp Push-pull device Bucket Hook Lengthened fork
---	---

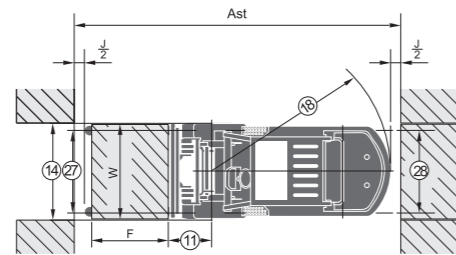
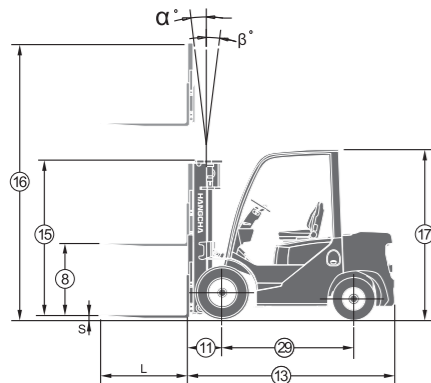


XF series 1.0-1.8t forklift specification:

		HANGCHA GROUP CO., LTD													
General	1	Manufacturer													
	2	Basic model	CPQD10	CPQD10	CPQD15	CPYD15	CPQD15	CPYD15	CPYD15	CPCD18	CPYD18	CPQD18	CPYD18	CPQYD18	
	3	Type	XW32F/B/M	XW21F/B/M	XW32F/B/M	XW51F/B/M	XW21F/B/M			XW32F/B/M	XW51F/B/M	XW21F/B/M			
	4	Power type	Diesel	Gasoline	Diesel	LPG	Gasoline	LPG	DUAL FUEL	Diesel	LPG	Gasoline	LPG	DUAL FUEL	
Characteristics & Dimensions	5	Rated Capacity	kg			1000			1500			1750			
	6	Load center	mm			500			500			500			
	7	Lifting height	mm			3000			3000			3000			
	8	Free lift height	mm			155			155			155			
	9	Fork size	L×W×T		mm			920×100×35			920×100×35				
	10	Mast tilt angle	F/R	(°)			6/12			6/12			6/12		
	11	Fork overhang (wheel center to fork face)	mm			405			405			405			
	12	Rear overhang	mm			375			405			430			
	13	Overall dimensions	length to face of fork	mm			2255			2285			2310		
	14		Overall width	mm			1080			1080			1080		
	15		Mast lowered height	mm			1995			1995			1995		
16	Mast extended height		mm			3955			3955			3955			
17	Overhead guard height	mm			2125 (2205*)			2125 (2205*)			2125 (2205*)				
18	Turning radius (outside)	mm			1965			1990			2015				
19	Min. right angle stacking aisle width (Add load length and clearance)	mm			2370			2395			2420				
Performance	20	Speed	Travel (No load)	km/h		19/19.3/19		18/18/18		19/19.3/19		18/18/18		18/18/18	
	21		Lifting (Full load)	mm/s		580		510		580		510		510	
	22		Lowering speed (with full load)	mm/s		500		500		500		500		500	
	23	Max. Drawbar Pull (Full load)	N	14600/14400/14100		14800/14600/14300		14600/14400/14100		14800/14600/14300		14600/14400/14100		14800/14600/14300	
24	Max. gradeability (Full load)*	%	40/39/38		41/40/39		33/33/32		34/33/33		30/30/29		31/30/30		
Chassis	25	Tyres	Front	mm			6.50-10-10PR			6.50-10-10PR			6.50-10-10PR		
	26		Rear	mm			5.00-8-10PR			5.00-8-10PR			5.00-8-10PR		
	27	Tread	Front	mm			900			900			900		
	28		Rear	mm			920			920			920		
	29	Wheelbase	mm			1475			1475			1475			
	30	Ground clearance	Lowest	mm			115			115			115		
31	Wheelbase center		mm			140			140			140			
Weight	32	Service weight	kg		2510		2650		2650		2760		2760		
	33	Weight Distribution	with Full load	Front/Rear		3055/455		3660/490		3660/490		3995/520		3995/520	
	34		without load	Front/Rear		1260/1250		1240/1410		1240/1410		1225/1540		1225/1540	
Power & transmission	35	Battery	Voltage/Capacity (20HR)	V/Ah		12/60		12/60		12/60		12/60		12/60	
	36	Engine	Model	4TNE92		K21		4TNE92		K21		4TNE92		K21	
	37		Manufacturer	YANMAR		GCT (NISSAN)		YANMAR		GCT (NISSAN)		YANMAR		GCT (NISSAN)	
	38		rated output	kW/r/min		32.8/2450		31.5/2300		32.8/2450		29/2250		31.5/2300	
	39		Rated torque	N·m/r/min		142/1600		144/1600		142/1600		144/1600		144/1600	
	40		No. of cylinder	4		4		4		4		4		4	
	41		Bore×stroke	mm		92×100		89×83		92×100		89×83		89×83	
	42		Emission STD	StagellIA/Tier4		StagellIA/Tier4		StagellIA/Tier4		StagellIA/Tier4		StagellIA/Tier4		StagellIA/Tier4	
	43	Displacement	mL		2659		2065		2659		2065		2065		
	44	Fuel tank capacity	L		50		50		50		28		50		
	45	Transmission	manufacturer	HANGCHA/OKAMURA/MS		HANGCHA/OKAMURA/MS		HANGCHA/OKAMURA/MS		HANGCHA/OKAMURA/MS		HANGCHA/OKAMURA/MS		HANGCHA/OKAMURA/MS	
	46		Type	Powershift		Powershift		Powershift		Powershift		Powershift		Powershift	
47	Stage		FWD/RVS		1/1		1/1		1/1		1/1		1/1		
48	Operating pressure	For attachments	MPa		14.5		14.5		14.5		14.5		14.5		

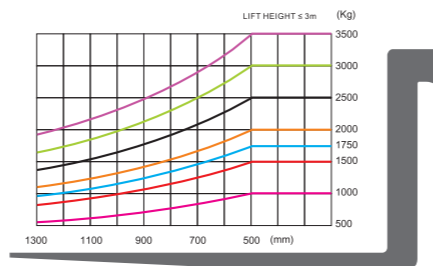
Note: *With suspension seat or cabin
 ※As a calculated value

DIMENSIONS



J = 200 mm safety clearance
 AST = J + F + ⑪ + ⑲

LOAD CHART



1.0 ~ 1.8t XF series mast: (pneumatic)

type	model	max. fork height	Overall height				Free lift		Front Overhang		Tilt range		Capacity					
			Lowered	Extended		Without backrest	With backrest	1/1.5t	1.75t	FWD	BWD	load capacity at 500mm						
				Without backrest	With backrest							Single tire			Dual tire			
		mm	mm	mm	mm	mm	mm	mm	mm	kg	kg	kg	kg	kg	kg			
Wide view mast	X15M200	2000	1495	2565	2955	155	155	405	410	6	12	1000	1500	1750	1000	1500	1750	
	X15M250	2500	1745	3065	3455	155	155	405	410	6	12	1000	1500	1750	1000	1500	1750	
	X15M270	2700	1845	3265	3655	155	155	405	410	6	12	1000	1500	1750	1000	1500	1750	
	X15M300	3000	1995	3565	3955	155	155	405	410	6	12	1000	1500	1750	1000	1500	1750	
	X15M330	3300	2145	3865	4255	155	155	405	410	6	12	1000	1500	1750	1000	1500	1750	
	X15M350	3500	2245	4065	4455	155	155	405	410	6	12	1000	1500	1750	1000	1500	1750	
	X15M370	3700	2395	4265	4655	155	155	405	410	6	12	1000	1500	1750	1000	1500	1750	
	X15M400	4000	2595	4600	4955	155	155	405	410	6	12	1000	1500	1650	1000	1500	1700	
	X15M430	4300	2745	4900	5255	155	155	405	410	6	6	950	1450	1600	1000	1450	1650	
	X15M450	4500	2845	5100	5455	155	155	405	410	6	6	900	1400	1550	950	1400	1600	
	X15M470	4700	2945	5300	5655	155	155	405	410	6	6	850	1350	1500	900	1350	1550	
	X15M500	5000	3095	5600	5955	155	155	405	410	6	6	800	1300	1450	850	1300	1500	
X15M550	5500	3345	6100	6455	155	155	405	410	6	6	750	1250	1400	800	1250	1450		
X15M600	6000	3595	6600	6955	155	155	405	410	6	6	700	1200	1350	750	1200	1400		
Wide view mast for Duplex mast	X15U200	2000	1560	2585	2945	975	615	405	410	6	12	1000	1500	1750	1000	1500	1750	
	X15U250	2500	1810	3085	3445	1225	865	405	410	6	12	1000	1500	1750	1000	1500	1750	
	X15U270	2700	1910	3285	3645	1325	965	405	410	6	12	1000	1500	1750	1000	1500	1750	
	X15U300	3000	2010	3590	3950	1425	1065	405	410	6	12	1000	1500	1750	1000	1500	1750	
	X15U330	3300	2160	3885	4245	1575	1215	405	410	6	12	1000	1500	1750	1000	1500	1750	
	X15U350	3500	2260	4085	4445	1675	1315	405	410	6	12	1000	1500	1750	1000	1500	1750	
	X15U370	3700	2360	4285	4645	1775	1415	405	410	6	12	1000	1500	1750	1000	1500	1750	
	X15U400	4000	2560	4585	4945	1975	1615	405	410	6	12	1000	1500	1650	1000	1500	1700	
	X15N400	4000	1970	4680	4955	1300	1025	420	425	6	6	900	1400	1550	950	1400	1600	
	X15N430	4300	2070	4980	5255	1400	1125	420	425	6	6	850	1350	1500	900	1350	1550	
	X15N450	4500	2120	5130	5455	1500	1175	420	425	6	6	800	1300	1450	850	1300	1500	
	X15N470	4700	2170	5380	5750	1585	1225	420	425	6	6	750	1250	1400	800	1250	1450	
Wide view mast for Triplex mast	X15N500	5000	2270	5595	5955	1685	1325	420	425	6	6	700	1200	1350	800	1250	1450	
	X15N550	5500	2470	6095	6455	1885	1525	420	425	3	6	650	950	1050	750	1150	1300	
	X15N600	6000	2720	6730	7055	2100	1775	420	425	3	6	600	700	750	700	1050	1150	
	X15N650	6500	2870	7180	7455	2200	1925	420	425	3	6	550	650	700	650	800	900	
	X15N700	7000	2970	7595	7955	2385	2025	420	425	3	6	500	600	650	550	700	800	

With sideshifter minus 150kg, with integral sideshifter minus 100kg.

XF series 2.0t forklift specification:

		HANGCHA GROUP CO., LTD																		
General	1	Manufacturer																		
	2	Basic model	CPCD20		CPYD20	CPQD20	CPYD20	CPQYD20	CPCD20	CPYD20	CPQD20	CPYD20	CPQYD20	CPCD20	CPCD20	CPCD20				
	3	Type	XW33F/B/M		XW52F/B/M	XW22F/B/M			XW32F	XW51F	XW21F			XW43F/B	XW55F/B	XW56F/B/M				
	4	Power type	Diesel	LPG	Gasoline	LPG	DUAL FUEL	Diesel	LPG	Gasoline	LPG	DUAL FUEL	Diesel	Diesel	Diesel					
Characteristics & Dimensions	5	Rated Capacity	2000																	
	6	Load center	500																	
	7	Lifting height	3000																	
	8	Free lift height	140																	
	9	Fork size	L×W×T 1070×122×40																	
	10	Mast tilt angle	F/R 6/12																	
	11	Fork overhang (wheel center to fork face)	465																	
	12	Rear overhang	415																	
	13	Overall dimensions	length to face of fork	2530																
	14		Overall width	1155																
	15		Mast lowered height	2035																
	16		Mast extended height	4045																
	17	Overhead guard height	2135(2215*)																	
	18	Turning radius (outside)	2180																	
19	Min. right angle stacking aisle width (Add load length and clearance)	2645																		
Performance	20	Speed	Travel (No load)	18.2/18.6/17.9	19/19.4/18.7	19/19.4/18.7			19.4	18.2	18.2			18.2/18.6	18.2/18.6	17.5/18				
	21	Speed	Lifting (Full load)	620		560	560			600	490	490			620	620	620			
	22		Lowering speed (with full load)	500		500	500			500	500	500			500	500	500			
	23		Max. Drawbar Pull (Full load)	N		19800/19400/19500	18700/18300/18400	18700/18300/18400			14300	14500	14500			19800/19400	19800/19400	19800/19400/19500		
24	Max.gradeability (Full load)*	%		35/34/34	33/32/32	33/32/32			24	25	25			35/34	35/34	35/34/34				
Chassis	25	Tyres	Front	7.00-12-12PR																
	26		Rear	6.00-9-10PR																
	27	Tread	Front	965																
	28		Rear	973																
	29	Wheelbase	1650																	
	30	Ground clearance	Lowest	115																
31	Wheelbase center		150																	
Weight	32	Service weight	3405																	
	33	Weight Distribution	with Full load	4705/700																
	34		without load	1610/1795																
Power & transmission	35	Battery	Voltage/Capacity (20HR)	V/Ah	12/90	12/60	12/60			12/90	12/60	12/60			12/90					
	36	Engine	Model	4TNE98		K25LPG	K25			4TNE92	K21LPG	K21			QSF2.8i3NA49	S4S-Z362CSFL	4TNV94L-BXPHZ			
	37		Manufacturer	YANMAR		GCT(NISSAN)	GCT(NISSAN)			YANMAR	GCT(NISSAN)	GCT(NISSAN)			CUMMINS	mitsubishi	YANMAR			
	38		rated output	kW/r/min		42.1/2300	35/2400	38/2400			32.8/2450	29/2250	31.5/2300			36.5/2500	35.3/2250	34.6/2400		
	39		Rated torque	N·m/r/min		186/1700	170/1600	185/1600			142/1600	140/1600	144/1600			186/1500	165/1700	191~208.5/1500		
	40		No. of cylinder	4		4	4			4	4	4			4	4	4			
	41		Bore×stroke	mm		98×110	89×100	89×100			92×100	89×83	89×83			94×100	94×120	94×110		
	42		Emission STD	StageIIIA/Tier3		StageIIIA/Tier4			StageIIIA/Tier4			StageIIIA			StageIIIA	StageIIIA	StageIIIA			
	43		Displacement	mL		3319	2488	2488			2659	2065	2065			2800	3331	3054		
	44		Fuel tank capacity	L		60	40	60	40	60	60	40	60	40	60	60	60	60		
	45		manufacturer	HANGCHA/OKAMURA/MS							HANGCHA							HANGCHA/OKAMURA		
	46		Transmission	Type	Powershift															
	47			Stage	FWD/RVS															
48	Operating pressure		For attachments	MPa																

Note: *With suspension seat or cabin
 ※ As a calculated value

2.0 ~ 2.5t XF series mast: (pneumatic)

type	model	max. fork height	Overall height				Free lift		Front Overhang	Tilt range		Capacity			
			Lowered	Extended		Without backrest	With backrest	FWD		BWD	load capacity at 500mm				
				Without backrest	With backrest						Single tire		Dual tire		
											2.0t	2.5t	2.0t	2.5t	
Wide view mast	X25M200	2000	1535	2660	3045	140	140	465	6	12	2000	2500	2000	2500	
	X25M250	2500	1785	3160	3545	140	140	465	6	12	2000	2500	2000	2500	
	X25M270	2700	1885	3360	3745	140	140	465	6	12	2000	2500	2000	2500	
	X25M300	3000	2035	3660	4045	140	140	465	6	12	2000	2500	2000	2500	
	X25M330	3300	2185	3960	4345	140	140	465	6	12	2000	2500	2000	2500	
	X25M350	3500	2285	4160	4545	140	140	465	6	12	2000	2500	2000	2500	
	X25M370	3700	2435	4360	4745	140	140	465	6	12	2000	2500	2000	2500	
	X25M400	4000	2635	4660	5045	140	140	465	6	12	2000	2450	2000	2500	
	X25M430	4300	2785	4960	5345	140	140	465	6	6	1950	2300	2000	2450	
	X25M450	4500	2855	5160	5545	140	140	465	6	6	1900	2150	1950	2300	
	X25M470	4700	2985	5360	5745	140	140	465	6	6	1850	2000	1900	2150	
	X25M500	5000	3135	5660	6045	140	140	465	6	6	1800	1850	1850	2000	
	X25M550	5500	3385	6160	6545	140	140	465	3	6	/	/	1600	1900	
	X25M600	6000	3635	6660	7045	140	140	465	3	6	/	/	1400	1750	
Wide view full free Duplex mast	X25U200	2000	1560	2680	3045	880	510	465	6	12	2000	2500	2000	2500	
	X25U250	2500	1810	3180	3545	1130	760	465	6	12	2000	2500	2000	2500	
	X25U270	2700	1910	3380	3745	1230	860	465	6	12	2000	2500	2000	2500	
	X25U300	3000	2010	3680	4045	1330	960	465	6	12	2000	2500	2000	2500	
	X25U330	3300	2160	3980	4345	1480	1110	465	6	12	2000	2500	2000	2500	
	X25U350	3500	2260	4180	4545	1580	1210	465	6	12	2000	2500	2000	2500	
	X25U370	3700	2360	4380	4745	1680	1310	465	6	12	2000	2500	2000	2500	
	X25U400	4000	2560	4680	5045	1880	1510	465	6	12	2000	2450	2000	2500	
Wide view full free Triplex mast	X25N400	4000	2000	4700	5045	1300	955	480	6	6	1900	2350	1950	2450	
	X25N430	4300	2100	5000	5345	1400	1055	480	6	6	1850	2200	1900	2350	
	X25N450	4500	2150	5230	5595	1470	1105	480	6	6	1800	2050	1850	2200	
	X25N470	4700	2200	5380	5745	1520	1155	480	6	6	1750	1900	1800	2050	
	X25N500	5000	2300	5680	6045	1620	1255	480	6	6	1700	1750	1800	2050	
	X25N550	5500	2500	6180	6545	1820	1455	480	3	6	1300	1400	1600	1900	
	X25N600	6000	2750	6730	7095	2070	1705	480	3	6	900	1000	1400	1750	
X25N650	6500	2900	7200	7545	2200	1855	480	3	6	/	/	1200	1450		
X25N700	7000	3050	7680	8045	2370	2005	480	3	6	/	/	1000	1150		

With sideshifter minus 150kg, with integral sideshifter minus 100kg.

XF series 2.5t forklift specification:

		HANGCHA GROUP CO., LTD																
General	1	Manufacturer	HANGCHA GROUP CO., LTD															
	2	Basic model	CPCD25	CPYD25	CPQD25	CPYD25	CPQYD25	CPCD25	CPYD25	CPQD25	CPYD25	CPQYD25	CPCD25	CPCD25	CPCD25			
	3	Type	XW33F/B/M	XW52F/B/M	XW22F/B/M			XW32F	XW51F	XW21F			XW43F/B	XW55F/B	XW56F/B/M			
	4	Power type	Diesel	LPG	Gasoline	LPG	DUAL FUEL	Diesel	LPG	Gasoline	LPG	DUAL FUEL	Diesel	Diesel	Diesel			
	5	Rated Capacity	kg		2500													
	6	Load center	mm															
Characteristics & Dimensions	7	Lifting height	mm															
	8	Free lift height	mm															
	9	Fork size	L×W×T		mm													
	10	Mast tilt angle	F/R		(*)													
	11	Fork overhang (wheel center to fork face)	mm															
	12	Rear overhang	mm															
	13	Overall dimensions	length to face of fork		mm													
	14		Overall width		mm													
	15		Mast lowered height		mm													
	16		Mast extended height		mm													
	17	Overhead guard height		mm														
18	Turning radius (outside)	mm																
19	Min. right angle stacking aisle width (Add load length and clearance)	mm																
Performance	20	Speed	Travel (No load)		km/h	18.2/18.6/17.9	19/19.4/18.7	19/19.4/18.7			19.4	18.2	18.2			18.2/18.6	18.2/18.6	17.5/18
	21		Lifting (Full load)		mm/s	620	560	560			600	490	490			620	620	620
	22		Lowering speed (with full load)		mm/s	500	500	500			500	500	500			500	500	500
	23	Max. Drawbar Pull (Full load)	N		19800/19400/19500	18700/18300/18400	18700/18300/18400			14300	14500	14500			19800/19400	19800/19400	19800/19400/19500	
	24	Max. gradeability (Full load)*	%		30/29/29	28/27/27	28/27/27			21	21	21			30/29	30/29	30/29/29	
Chassis	25	Tyres	Front		mm													
	26		Rear		mm													
	27	Tread	Front		mm													
	28		Rear		mm													
	29	Wheelbase	mm															
	30	Ground clearance	Lowest		mm													
31	Wheelbase center		mm															
Weight	32	Service weight	kg		3765													
	33	Weight Distribution	with Full load		Front/Rear													
	34		without load		Front/Rear													
Power & transmission	35	Battery	Voltage/Capacity (20HR)		V/Ah	12/90	12/60	12/60			12/90	12/60	12/60			12/90		
	36	Engine	Model		4TNE98													
	37		Manufacturer		YANMAR	GCT (NISSAN)	GCT (NISSAN)			YANMAR	GCT (NISSAN)	GCT (NISSAN)			QSF2.8i3NA49	S4S-Z362CSFL	4TNV94L-BXPHZ	
	38		rated output		kW/r/min	44.3/2300	35/2400	38/2400			32.8/2450	29/2250	31.5/2300			36.5/2500	35.3/2250	34.6/2400
	39		Rated torque		N·m/r/min	196/1700	170/1600	185/1600			142/1600	140/1600	144/1600			186/1500	165/1700	191~208.5/1500
	40		No. of cylinder		4													
	41		Bore×stroke		mm	98×110	89×100	89×100			92×100	89×83	89×83			94×100	94×120	94×110
	42		Emission STD		StageIIIA/Tier3													
	43		Displacement		mL	3319	2488	2488			2659	2065	2065			2800	3331	3054
	44		Fuel tank capacity		L	60	40	60	40	60	60	40	60	40	60	60	60	60
	45		manufacturer		HANGCHA/OKAMURA/MS													
	46		Transmission	Type		Powershift												
47	Stage			FWD/RVS														
48	Operating pressure	For attachments		MPa														

Note: *With suspension seat or cabin
 ※ As a calculated value

XF series 3.0-3.5t forklift specification:

			HANGCHA GROUP CO., LTD																																		
General	1	Manufacturer																																			
	2	Basic model	CPQD30	CPYD30	CPQD30	CPYD30	CPQYD30	CPQD30	CPQD30	CPQD30	CPQD35	CPYD35	CPQD35	CPYD35	CPQYD35	CPQD35	CPQD35	CPQD35																			
	3	Type	XW33F/B/M		XW52F/B/M		XW22F/B/M			XW43F/B		XW55F/B		XW56F/B/M		XW22F/B/M			XW43F/B	XW55F/B	XW56F/B/M																
	4	Power type	Diesel		LPG		Gasoline			LPG		DUAL FUEL			Diesel		Diesel		Diesel			Diesel	Diesel	Diesel													
Characteristics & Dimensions	5	Rated Capacity	3000													3500																					
	6	Load center	500																																		
	7	Lifting height	3000																																		
	8	Free lift height	145																																		
	9	Fork size	L×W×T		1070×122×45																																
	10	Mast tilt angle	F/R		6/12																																
	11	Fork overhang (wheel center to fork face)	485																																		
	12	Rear overhang	615																																		
	13	Overall dimensions	length to face of fork	2730																																	
	14		Overall width	1225																																	
	15		Mast lowered height	2050																																	
	16		Mast extended height	4145																																	
17	Overhead guard height	2150 (2230*)														2150 (2230*)																					
18	Turning radius (outside)	2415																																			
19	Min. right angle stacking aisle width (Add load length and clearance)	2835																																			
Performance	20	Speed	Travel (No load)	17.2/17.6/17.6				17.9/18.4/18.3				17.9/18.4/18.3				17.2/17.6		17.2/17.6		18.6/19		17.2/17.6/17.6		17.9/18.4/18.3		17.2/17.6		17.2/17.6		18.6/19							
	21		Lifting (Full load)	490		450		450		490		490		490		430		385		385		430		430		430											
	22		Lowering speed (with full load)	500		500		500		500		500		500		500		500		500		500		500		500											
	23	Max. Drawbar Pull (Full load)	N		21000/20500/19900		19800/19300/18700		19800/19300/18700				21000/20500		21000/20500		20800/20300/19900		21000/20500/19900		19800/19300/18700		21000/20500		21000/20500		20800/20300/19900										
24	Max.gradeability (Full load)*	%		27/26/25		25/24/23		25/24/23				27/26		26/25		27/26/25		24/23/22		22/22/21		22/22/21		24/23		23/22		24/23/22									
Chassis	25	Tyres	Front	28×9-15-12PR												28×9-15-12PR																					
	26		Rear	6.50-10-10PR																																	
	27	Tread	Front	1005																																	
	28		Rear	975																																	
	29	Wheelbase	1700																																		
Weight	30	Ground clearance	Lowest	130																																	
	31		Wheelbase center	165																																	
Power & transmission	32	Service weight	kg		4350								4705																								
	33	Weight Distribution	with Full load	Front/Rear		6450/900								7255/950																							
	34		without load	Front/Rear		1750/2600																															
Power & transmission	35	Battery	Voltage/Capacity (20HR)	V/Ah	12/90				12/60				12/90				12/90				12/60				12/90												
	36	Engine	Model	4TNE98				K25LPG				K25				QSF2.8t3NA49		S4S-Z362CSFL		4TNV94L-BXPHZ		4TNE98		K25LPG		K25		QSF2.8t3NA49		S4S-Z362CSFL		4TNV94L-BXPHZ					
	37		Manufacturer	YANMAR		GCT (NISSAN)		GCT (NISSAN)				CUMMINS		MITSUBISHI		YANMAR		YANMAR		GCT (NISSAN)		YANMAR		GCT (NISSAN)		YANMAR		GCT (NISSAN)		YANMAR							
	38		rated output	kW/r/min				44.3/2300				35/2400				38/2400				36.5/2500		35.3/2250		34.6/2400		44.3/2300		35/2400		38/2400		36.5/2500		35.3/2250		34.6/2400	
	39		Rated torque	N·m/r/min				196/1700				170/1600				185/1600				186/1500		165/1700		191~208.5/1500		196/1700		170/1600		185/1600		186/1500		165/1700		191~208.5/1500	
	40		No. of cylinder	4				4				4				4		4		4		4		4		4		4		4		4		4			
	41		Bore×stroke	mm				98×110				89×100				89×100				94×100		94×120		94×110		98×110		89×100		89×100		94×100		94×120		94×110	
	42		Emission STD	StageIIIA/Tier3												StageIIIA		StageIIIA		StageIIIA/Tier3												StageIIIA					
	43		Displacement	mL				3319				2488				2488				2800		3331		3054		3319		2488		2488		2800		3331		3054	
	44		Fuel tank capacity	L				70				70				70		70		70		70		70		70		40		70		40		70		70	
	45	Transmission	manufacturer	HANGCHA/OKAMURA/MS								HANGCHA/OKAMURA				HANGCHA/OKAMURA/MS				HANGCHA/OKAMURA/MS				HANGCHA/OKAMURA				HANGCHA/OKAMURA/MS									
	46		Type	Powershift																																	
	47		Stage	FWD/RVS		1/1																															
	48	Operating pressure	For attachments	MPa		17.5																															

Note: *With suspension seat or cabin
 ※As a calculated value

3.0 ~ 3.5t XF series mast: (pneumatic)

type	model	max. fork height	Overall height						Free lift						Capacity load capacity at 500mm							
			Lowered (mm)		Extended				Without backrest (mm)		With backrest (mm)				Front Overhang (mm)		Tilt range		Single tire (kg)		Dual tire (kg)	
			3.0t	3.5t	3.0t	3.5t	3.0t	3.5t	3.0t	3.5t	3.0t	3.5t	3.0t	3.5t	3.0t	3.5t	3.0t	3.5t	3.0t	3.5t	3.0t	3.5t
Wide view mast	X30/35M200	2000	1550	1665	2735	2815	3145	3145	145	145	145	145	480	485	6	12	3000	3500	3000	3500		
	X30/35M250	2500	1800	1915	3235	3315	3645	3645	145	145	145	145	480	485	6	12	3000	3500	3000	3500		
	X30/35M270	2700	1900	2015	3435	3515	3845	3845	145	145	145	145	480	485	6	12	3000	3500	3000	3500		
	X30/35M300	3000	2050	2165	3735	3815	4145	4145	145	145	145	145	480	485	6	12	3000	3500	3000	3500		
	X30/35M330	3300	2200	2315	4035	4115	4445	4445	145	145	145	145	480	485	6	12	3000	3500	3000	3500		
	X30/35M350	3500	2300	2415	4235	4315	4645	4645	145	145	145	145	480	485	6	12	3000	3500	3000	3500		
	X30/35M370	3700	2450	2565	4435	4515	4845	4845	145	145	145	145	480	485	6	12	3000	3500	3000	3500		
	X30/35M400	4000	2650	2715	4735	4815	5145	5145	145	145	145	145	480	485	6	12	3000	3450	3000	3450		
	X30/35M430	4300	2800	2865	5035	5115	5445	5445	145	145	145	145	480	485	6	6	2850	3300	3000	3300		
	X30/35M450	4500	2900	2965	5235	5315	5645	5645	145	145	145	145	480	485	6	6	2700	3150	2850	3150		
	X30/35M470	4700	3000	3065	5435	5515	5845	5845	145	145	145	145	480	485	6	6	2550	3000	2700	3000		
	X30/35M500	5000	3135	3215	5735	5815	6145	6145	145	145	145	145	480	485	6	6	2400	2850	2550	2850		
Wide view full free Duplex mast	X30/35M550	5500	3400	3465	6235	6315	6645	6645	145	145	145	145	480	485	3	6	2400	2850	2400	2850		
	X30/35M600	6000	3650	3715	6735	6815	7145	7145	145	145	145	145	480	485	3	6	2200	2700	2200	2700		
	X30/35U200	2000	1620	1720	2755	2830	3145	3145	865	890	475	475	480	480	6	12	3000	3500	3000	3500		
	X30/35U250	2500	1870	1970	3255	3330	3645	3645	1115	1140	725	725	480	480	6	12	3000	3500	3000	3500		
	X30/35U270	2700	1970	2070	3455	3530	3845	3845	1215	1240	825	825	480	480	6	12	3000	3500	3000	3500		
	X30/35U300	3000	2080	2180	3755	3830	4145	4145	1325	1350	935	935	480	480	6	12	3000	3500	3000	3500		
	X30/35U330	3300	2230	2330	4055	4130	4445	4445	1475	1500	1085	1085	480	480	6	12	3000	3500	3000	3500		
	X30/35U350	3500	2330	2430	4255	4330	4645	4645	1575	1600	1185	1185	480	480	6	12	3000	3500	3000	3500		
	X30/35U370	3700	2430	2530	4455	4530	4845	4845	1675	1700	1285	1285	480	480	6	12	3000	3500	3000	3500		
	X30/35U400	4000	2580	2680	4755	4830	5145	5145	1825	1850	1435	1435	480	480	6	12	3000	3450	3000	3450		
	Wide view full free Triplex mast	X30/3N400	4000	2015	212	4755	4830	5145	5145	1260	1285	870	970	495	495	6	6	2900	3350	3000	3350	
		X30/3N430	4300	2115	2215	5055	5130	5445	5445	1360	1385	970	1070	495	495	6	6	2750	3200	2900	3200	
X30/3N450		4500	2165	2265	5305	5380	5695	5695	1410	1435	1020	1120	495	495	6	6	2600	3050	2750	3050		
X30/3N470		4700	2215	2315	5555	5630	5945	5945	1460	1485	1070	1170	495	495	6	6	2450	2900	2600	2900		
X30/3N500		5000	2315	2415	5755	5830	6145	6145	1560	1585	1170	1270	495	495	6	6	2300	2750	2600	2900		
X30/3N550		5500	2515	2565	6255	6330	6645	6645	1760	1735	1370	1420	495	495	3	6	1850	2200	2400	2650		
X30/3N600		6000	2765	2815	6805	6880	7195	7195	2010	1985	1620	1670	495	495	3	6	1400	1650	2200	2400		
X30/3N650	6500	2915	2965	7255	7330	7645	7645	2160	2135	1770	1820	495	495	3	6	1200	1450	1700	1850			
X30/3N700	7000	3065	3115	7755	7830	8145	8145	2310	2285	1920	1970	495	495	3	6	1000	1200	1400	1500			

With sideshifter minus 200kg, with integral sideshifter minus 100kg.